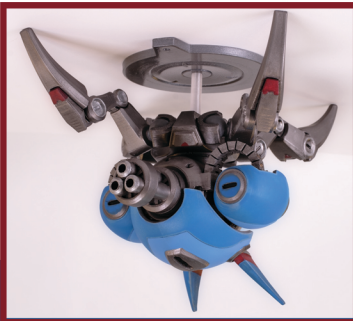
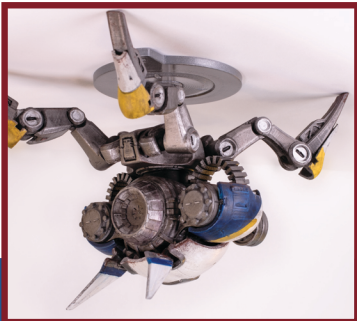
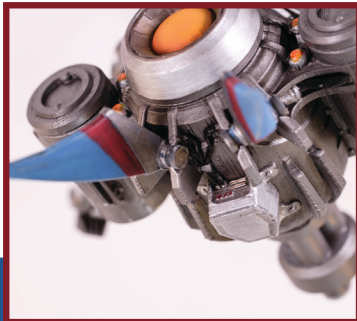




160425



KIT INCLUDES  
8 PAGE INSTRUCTION  
MANUAL  
63 DETAILED PLASTIC  
PARTS THAT CAN BE  
USED TO ASSEMBLE  
ONE MODEL KIT IN  
ONE OF TWO  
CONFIGURATIONS  
PAINT GUIDES FOR  
SENKAISHU BLUE  
LIVERY (PICTURED)  
STAND

PHOTOS OF THE  
PROTOTYPE MODELS

PLASTIC GLUE TOGETHER MODEL KIT // SKILL LEVEL 3

GUNBOT

SENKAISHU MODEL G1



# GUNBOT

## SENKAISHU MODEL G1

INCLUDES  
PARTS FOR BOTH  
G1-B & G1-C  
MODELS

IMAGES ON BOX ARE FOR ILLUSTRATIVE PURPOSES ONLY AND MAY VARY SLIGHTLY FROM PRODUCT



BATTLE  
ACES

IN FOND MEMORY OF BATTLE ACES, THE FIRST ACTION REAL-TIME STRATEGY GAME BY UNCAPED GAMES, THE KIT NUMBER 16-04-25 WAS THE START DATE OF OUR LAST OPEN BETA. THE FANTASTIC EFFORT OF OVER 50 PEOPLE, IT WAS SOMETHING NEW FOR RTS, AND WAS A FUN, CONDENSE, AND POLISHED EXPERIENCE. MAYBE ONE DAY ACES WILL ONCE AGAIN TAKE TO BATTLEFIELDS TO FIGHT FOR GLORY AND THE TITLE OF TOP ACE.

GUNBOT // 160425 // 1:16 SCALE MODEL KIT



160425 // 1:16 SCALE MODEL KIT

GUNBOT // 1:16 SCALE MODEL KIT // 160425

1:16  
SCALE  
MODEL KIT

160425

# SENKAISHU

EXPAND.DELIVER.CONTROL.

PAINT GUIDE

GUNMETAL	FLAT BLACK
CHROME	LIGHT SEA BLUE
BRASS	ELECTRIC BLUE
COPPER	FERRARI RED

10.5 CM / 4.1 IN



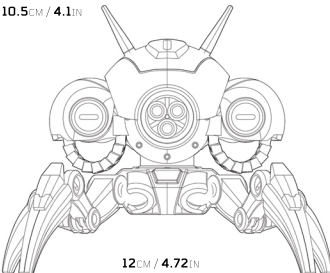
SANDING RECOMMENDED

THIS MODEL HAS BEEN MADE WITH FDM PRINTING. SANDING AND FILLING IS HIGHLY RECOMMENDED TO ACHIEVE THE BEST RESULTS

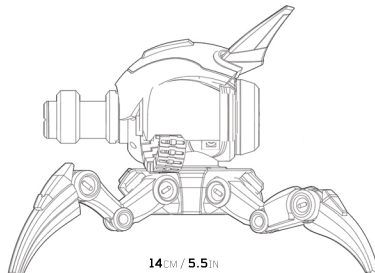


GLUE REQUIRED

THIS MODEL IS PARTIALLY ARTICULATING, BUT GLUE IS REQUIRED IN THE ASSEMBLY. SUPER GLUE (CYANOACRYLATE) IS RECOMMENDED FOR THE BEST RESULTS. PAINT AND GLUE NOT INCLUDED.



12 CM / 4.72 IN



14 CM / 5.5 IN

The first of its kind, the Gunbot G1 by Senkaishu Limited is a salute to enduring military craftsmanship. Its primary weapon, a robust 30cal Minigun, offers sustained damage, especially when Overclocked. Perfect for establishing a quick, revolving firing line or pushing crucial positions, the G1 is a well-rounded unit for any ground combat scenario.

Born from the shadows of a world adapting to remote warfare, the Gunbot G1 was Senkaishu Limited's answer to a growing need for durable, autonomous combat units. Its inception was amidst the dawn of microchips, a time when battlefields were becoming faster and smarter. The Gunbot G1 may not boast the complex capability of higher-tech units, but in the annals of ground combat, it's celebrated as a symbol of persistence. After 600 years of improvements, it is still a top choice among Aces.

